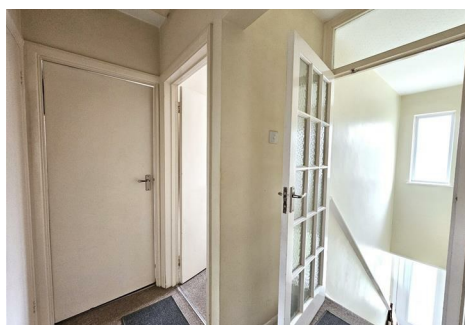


est 1979

Jeremy
Leaf & Co.



Cromwell Close, N2

£1,850 Per Week

- Two Double Bedrooms
- Balcony
- Recently Painted
- Furnished
- 1st Floor Maisonette
- Recently Carpeted
- Available 4th June

98 High Road, London, N2 9EB
020 8444 5222

eastfinchley@jeremyleaf.co.uk
<https://www.jeremyleaf.co.uk/>

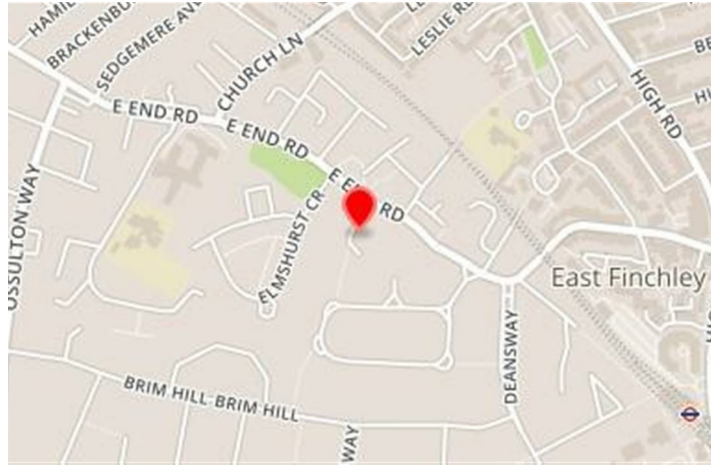
Cromwell Close, East Finchley, N2 0LL

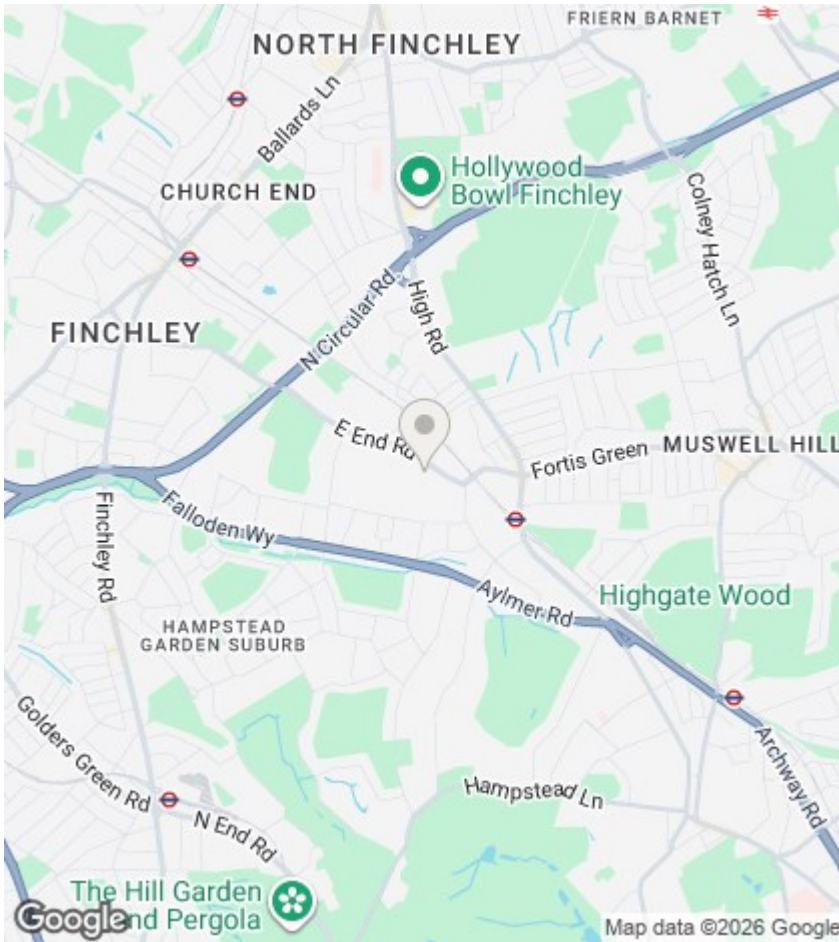
We offer a furnished two double bedroom first floor flat. Comprises: Recently fitted new carpet on stairs leading to first floor 2 double bedrooms, spacious lounge, separate kitchen and bathroom. Situated on a quiet leafy cul-de-sac off East End Road within 12 minute walk to East Finchley Tube Stn (Northern Line Zone 3). EPC D, Council tax band D. Available 4th June or possibly earlier.



Council Tax Band: D







Directions

Viewings

Viewings by arrangement only. Call 020 8444 5222 to make an appointment.

EPC Rating:

D

Energy Efficiency Rating		Current	Potential
Very energy efficient - lower running costs			
(92 plus) A			
(81-91) B			82
(69-80) C			
(55-68) D		58	
(39-54) E			
(21-38) F			
(1-20) G			
Not energy efficient - higher running costs			
England & Wales		EU Directive 2002/91/EC	